



POCKET SQUARE CLOTHING

A GENTLEMEN'S CLOTHING CO.
MADE IN LOS ANGELES

W. WWW.POCKETSQUARECLOTHING.COM **E.** WHOLESALE@POCKETSQUARECLOTHING.COM

LINE SHEET



POCKET SQUARE CLOTHING

A GENTLEMEN'S CLOTHING CO.
MADE IN LOS ANGELES



Classic Collection

The Classic Collection's pieces are the cornerstone of PSC's design aesthetic. Constructed in a variety of fabrics (including wools, cottons, and silks) and original patterns, these Classic items are cleverly nuanced, but always elegant.



Workwear Collection

The heritage inspired Workwear Collection draws from traditional collegiate design. Its classic narrow silhouette gives each piece a modern and tailored fit. The collection is made up of vintage silks and tweeds, perfect for the working man. Each piece is an ode to everyday gentlemen.



Floral Collection

The Floral Collection is composed of distinctively patterned pieces. The prints, as the name suggests, are primarily floral, with a few tropical elements. The fabric selection ranges from cotton to canvas, in bright and understated colors alike.



Emissary Collection

Both clean and sharp, our Emissary Collection channels the diplomatic halls of the United Nations and Pentagon combined. These pieces strike a balance between windowpane suiting and camo print. Made of wool, linen, and canvas, their neutral colors make this collection appropriate for most occasions.



Ice Cream Collection

Designed to reflect the youthful nature of the brand, the Ice Cream Collection features numerous colorful skinny ties. Mostly made of linen, you will also find corduroy, denim, canvas, and cotton pieces each packaged in custom ice cream pint containers. The concept revolves inherently around ice cream, and much like the classic collection, they too will have their own stories, or flavors for that matter.



Rome Castille Collection

Designed for Pocket Square Clothing, the collection is a manifestation of several collaborations with up and coming Recording Artist Rome Castille. As his first fashion collaboration, Rome sought to use his style and energy to define the collection's feel and color palette. In the collection you will find a mix of floral and tropical prints which were channeled from the style of his "The Summer Collection" mix-tape.



POCKET SQUARE CLOTHING

A GENTLEMEN'S CLOTHING CO.
MADE IN LOS ANGELES

About

Pocket Square Clothing (PSC) is a men's lifestyle apparel brand based in Los Angeles, California. They design and manufacture men's accessories which include their collections of bow ties, ties, and pocket squares. PSC's most recent addition to their collections is the Ice Cream Collection. The brand focuses on designing standalone, timeless pieces that compliment the Urban Gentleman's taste and add a higher level of complexity to his wardrobe. We like to say that the Urban Gentleman is a "sophisticated type of cool."

Pocket Square Clothing

A pocket square, in its humble beginnings, was derived from the handkerchief, which was used for personal hygiene. The modern day pocket square has since shifted to an iconic piece used as a subtle accent to distinguish one self. Deconstructing the significance of the pocket square, Pocket Square Clothing sought to take the iconic piece's symbolism and apply it to the broader scheme of clothing design.

History

Pocket Square Clothing was established in 2011 as a men's accessory brand. With no formal fashion training but with an architectural and business background, Rodolfo Ramirez and Andrew Cheung sought to create a lifestyle brand beyond clothing. To date they feature a collection of handcrafted bow ties, skinny neckties and pocket squares. The brand is a reflection of the ideals behind the Urban Gentleman. This is their effort to tell a story, to inspire and be inspired, and to create a powerful connection with you through timeless pieces.

Vision

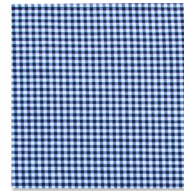
The vision is simple: to become a vehicle for the individual exploration of style. Pocket Square Clothing embraces the idea that style comes down to one's composure and being, the way one carries himself. The mission is to create a collection of visual and artistic accents, accents that then serve as to punctuate and project personality. The brand is inspired by the idea that everyone can move forward in life through style and etiquette, and the belief that clothing is a language that communicates one's individualistic qualities. Art, music, entertainment, architecture, and culture define the PSC lifestyle. The brand delves into realms of Urban, Vintage, and Chic Style. Pocket Square Clothing looks to create a brand beyond just clothing, and become a network of individuals who love clothing and use it to help decipher their style.



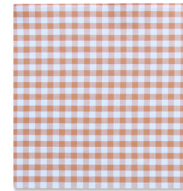


POCKET SQUARE CLOTHING

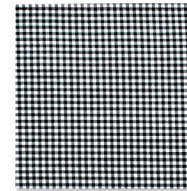
A GENTLEMEN'S CLOTHING CO.
MADE IN LOS ANGELES



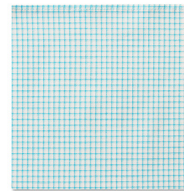
SOUTHERN GENT
COTTON
#11020



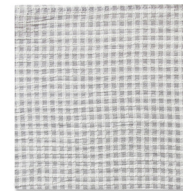
SOUTHERN GENT
COTTON
#11021



SOUTHERN GENT
COTTON
#11070



SOUTHERN GENT
COTTON
#11046



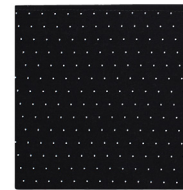
SOUTHERN GENT
COTTON
#11029



THE NORRIS
POLY BLEND
#11061



THE ELLINGTON
POPLIN
#21009



THE HARRISON
COTTON BLEND
#11039



THE MASON
RAYON
#21004

POCKET SQUARES
WHOLESALE : \$13 USD
SUGGESTED RETAIL: \$26 USD
PRODUCT SPECS: 11" X 11"



POCKET SQUARE CLOTHING

A GENTLEMEN'S CLOTHING CO.
MADE IN LOS ANGELES



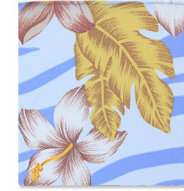
THE SOCIALITE
COTTON BLEND
#31016



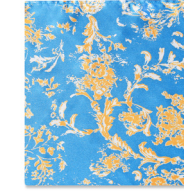
THE ARCADIA
LACE
#11040



THE MADISON
SATIN
#31006



THE KAILANI
SILK CHIFFON
#31024



THE REGAL
SATIN
#11027



THE SATORI
SATIN
#31015



THE ARRAS
SILK
#41007



THE MELANIE
COTTON
#31019



THE SIENA
RAYON
#31021

POCKET SQUARES
WHOLESALE : \$13 USD
SUGGESTED RETAIL: \$26 USD
PRODUCT SPECS: 11" X 11"



POCKET SQUARE CLOTHING

A GENTLEMEN'S CLOTHING CO.
MADE IN LOS ANGELES



THE AZALEA
LINEN
#31031



THE ECLAIRE
POLY BLEND
#31032



THE FLEUR
RAYON
#31020



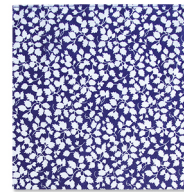
THE NATHALIE
COTTON
#31026



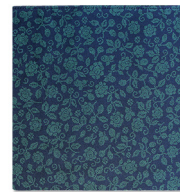
THE AMELIE
COTTON
#31027



THE MADELINE
COTTON
#31028



THE HELENE
COTTON
#31029



THE ANNETTE
COTTON
#31030



THE MALDEN
COTTON
#11051

POCKET SQUARES
WHOLESALE : \$13 USD
SUGGESTED RETAIL: \$26 USD
PRODUCT SPECS: 11" X 11"



POCKET SQUARE CLOTHING

A GENTLEMEN'S CLOTHING CO.
MADE IN LOS ANGELES



THE MERROW
NAVY COTTON
#11030



THE MERROW
RED COTTON
#11031



THE MERROW
GREEN COTTON
#11032



THE MERROW
BLACK COTTON
#11033



THE MERROW
NUDE COTTON
#11034



THE MERROW
MINT COTTON
#11054



THE MERROW
BLUSH BLUE COTTON
#11052



THE MERROW
CORAL COTTON
#11057



THE MERROW
YELLOW COTTON
#11053

POCKET SQUARES
WHOLESALE : \$13 USD
SUGGESTED RETAIL: \$26 USD
PRODUCT SPECS: 11" X 11"



POCKET SQUARE CLOTHING

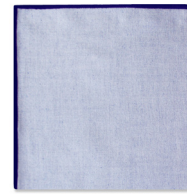
A GENTLEMEN'S CLOTHING CO.
MADE IN LOS ANGELES



THE MERROW
TAN COTTON
#11055



THE MERROW
BLUSH PINK COTTON
#11056



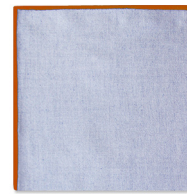
THE MERROW
NAVY CHAMBRAY
#11035



THE MERROW
MAROON CHAMBRAY
#11043



THE MERROW
MINT CHAMBRAY
#11058



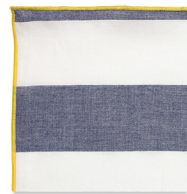
THE MERROW
ORANGE CHAMBRAY
#11059



THE MERROW
MAROON CHAMBRAY
#11050



THE QUINN
CHAMBRAY
#31025



THE MARINER
CHAMBRAY
#11060

POCKET SQUARES
WHOLESALE : \$13 USD
SUGGESTED RETAIL: \$26 USD
PRODUCT SPECS: 11" X 11"



POCKET SQUARE CLOTHING

A GENTLEMEN'S CLOTHING CO.
MADE IN LOS ANGELES



THE BEVERLY
SATIN
#21005



THE NEIMAN
SILK
#11045



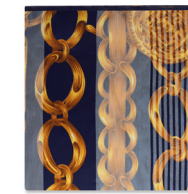
THE NIGHTINGALE
RAYON
#11036



THE OBI
SILK
#41006



THE HARLEM
COTTON
#31002



THE IZABELLA
SATIN CHIFFON
#11025



BLACK PANTHER
COTTON
#41002



THE CORPORAL
VELVET
#41003



THE NAVAJO
CHAMBRAY
#11005

POCKET SQUARES
WHOLESALE : \$13 USD
SUGGESTED RETAIL: \$26 USD
PRODUCT SPECS: 11" X 11"



POCKET SQUARE CLOTHING

A GENTLEMEN'S CLOTHING CO.
MADE IN LOS ANGELES



THE NAIRA
SILK CHARMEUSE
#11022



THE CLEOPATRA
SILK CHARMEUSE
#11023



THE TIFFANY
RETRO RAYON
#11038



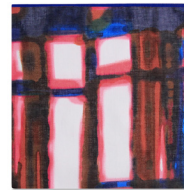
THE TAO
SILK CREPE
#11028



THE MONARCH
SILK CREPE
#11026



THE MONARCH
SILK CREPE
#11066



THE NIYOL
COTTON
#11024



THE FINN
COTTON
#11041



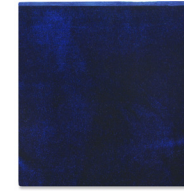
THE IVY
SILK
#11037

POCKET SQUARES
WHOLESALE : \$13 USD
SUGGESTED RETAIL: \$26 USD
PRODUCT SPECS: 11" X 11"

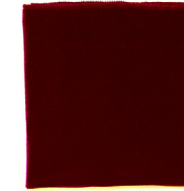


POCKET SQUARE CLOTHING

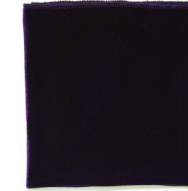
A GENTLEMEN'S CLOTHING CO.
MADE IN LOS ANGELES



THE ROYAL
VELVET
#11019



THE ROYAL
VELVET
#11042



THE ROYAL
VELVET
#11018



THE YOGI
SATIN
#61004



THE ROMIE ARTULETTA
SATIN
#61003



THE MONA LISA
RAYON BLEND
#61001



THE COMPANION
RAYON BLEND
#61002



THE OLIVIA
COTTON
#31017



THE OLIVIA
COTTON
#31018

POCKET SQUARES
WHOLESALE : \$13 USD
SUGGESTED RETAIL: \$26 USD
PRODUCT SPECS: 11" X 11"



POCKET SQUARE CLOTHING

A GENTLEMEN'S CLOTHING CO.
MADE IN LOS ANGELES



THE YORK
NAVY MERROW DENIM
#11062



THE YORK
TAN MERROW DENIM
#11063



THE YORK
ORANGE MERROW DENIM
#11064



THE YORK
DENIM
#11065

POCKET SQUARES
WHOLESALE : \$13 USD
SUGGESTED RETAIL: \$26 USD
PRODUCT SPECS: 11" X 11"



POCKET SQUARE CLOTHING

A GENTLEMEN'S CLOTHING CO.
MADE IN LOS ANGELES



THE LAILA
COTTON TWILL
#32009



THE ATIFA
COTTON TWILL
#12007



THE NABIL
COTTON
#32010



THE ZIA
COTTON TWILL
#32015



THE ALEXANDRIA
LINEN
#32005



THE HERON
COTTON
#12020



THE A.J.G
DENIM
#62001



THE RHAPSODY
COTTON TWILL
#32004

SKINNY TIES
WHOLESALE : \$28 USD
SUGGESTED RETAIL: \$56 USD
PRODUCT SPECS: 2" WIDTH



POCKET SQUARE CLOTHING

A GENTLEMEN'S CLOTHING CO.
MADE IN LOS ANGELES



CINNAMON KIWI
LINEN
#52009



PEACH RASPBERRY
LINEN
#52013



THE DIPLOMAT
LINEN
#42005



CARAMEL RASPBERRY
CORDUROY
#52006



TOFFEE
COTTON
#52016



THE BRIGGS
RAYON WOOL BLEND
#12016



THE DEAN
RAYON WOOL BLEND
#12018



THE DEAN
RAYON WOOL BLEND
#12019

SKINNY TIES
WHOLESALE : \$28 USD
SUGGESTED RETAIL: \$56 USD
PRODUCT SPECS: 2" WIDTH



POCKET SQUARE CLOTHING

A GENTLEMEN'S CLOTHING CO.
MADE IN LOS ANGELES



CITRON
POPLIN
#53001



ROSE
POPLIN
#53002



COTTON CANDY
POPLIN
#53003



WILDBERRY
POPLIN
#53004



MANGO
POPLIN
#53005



JUNIPER
POPLIN
#53006



THE DIPLOMAT
POPLIN
#43003



THE FORD
POPLIN
#13015

SLIM TIES
WHOLESALE : \$28 USD
SUGGESTED RETAIL: \$56 USD
PRODUCT SPECS: 2 1/2" WIDTH



POCKET SQUARE CLOTHING

A GENTLEMEN'S CLOTHING CO.
MADE IN LOS ANGELES



THE KENNETH
COTTON BLEND
#43004



THE WILLIAM
WOOL TWEED
#13020



THE REAGAN
SILK
#23017



THE HAMILTON
CHAMBRAY
#13018



THE WILSON
CHAMBRAY
#13019



THE KERRINGTON
COTTON
#13021



THE MILANA
COTTON
#33001



THE LAWRENCE
WOOL BLEND
#13017



THE EMORY
POLY SUITING
#13013

SLIM TIES
WHOLESALE : \$28 USD
SUGGESTED RETAIL: \$56 USD
PRODUCT SPECS: 2 1/2" WIDTH



POCKET SQUARE CLOTHING

A GENTLEMEN'S CLOTHING CO.
MADE IN LOS ANGELES



THE KAYO
COTTON
#13003



THE SPORTSMAN
WOVEN COTTON
#13006



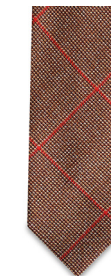
THE ALNWICK
WOOL SUITING
#23001



THE HUMLEDON
WOOL
#23005



THE YANKEE
DENIM
#23009



THE HAMPSHIRE
WOOL
#23007



THE KENNEDY
WOOL
#13012



THE CARTER
CANVAS
#13007



THE TRUMAN
SUITING
#13005

SLIM TIES
WHOLESALE : \$28 USD
SUGGESTED RETAIL: \$56 USD
PRODUCT SPECS: 2 1/2" WIDTH



POCKET SQUARE CLOTHING

A GENTLEMEN'S CLOTHING CO.
MADE IN LOS ANGELES



THE ROOSEVELT
COTTON BLEND
#13004



THE LLOYD
WOOL BLEND
#13016



THE ALDEN
WOOL BLEND
#13001



THE MONROE
WOOL BLEND
#13011



THE ADAM
WOOL BLEND
#13008



THE EISENHOWER
WOOL BLEND
#13009



THE NATO
COTTON TWILL
#43002



THE NERO
POLY SUITING
#13014

SLIM TIES
WHOLESALE : \$28 USD
SUGGESTED RETAIL: \$56 USD
PRODUCT SPECS: 2 1/2" WIDTH



POCKET SQUARE CLOTHING

A GENTLEMEN'S CLOTHING CO.
MADE IN LOS ANGELES



THE DERBYSHIRE
POLY WOOL SUITING
#23016



THE ROCHDALE
POLY WOOL SUITING
#23014



THE STOCKPORT
POLY WOOL SUITING
#23013



THE OLDHAM
WOOL
#23015

TIES
WHOLESALE : \$28 USD
SUGGESTED RETAIL: \$56 USD
PRODUCT SPECS: 3" WIDTH



POCKET SQUARE CLOTHING

A GENTLEMEN'S CLOTHING CO.
MADE IN LOS ANGELES



THE MELLOR
SILK KNIT
#12012



THE MERSEYSIDE
SILK KNIT
#12011



THE LANCANSHRE
SILK KNIT
#12013



THE CASTLEFIELD
SILK KNIT
#12014



THE ENFIELD
SILK KNIT
#12022



THE ENFIELD
SILK KNIT (2 1/4 INCH)
#12021



THE STRETFORD
SILK KNIT
#12010

SILK KNIT TIES
WHOLESALE : \$28 USD
SUGGESTED RETAIL: \$56 USD
PRODUCT SPECS: 2 1/4"-2 1/2" WIDTH



POCKET SQUARE CLOTHING

A GENTLEMEN'S CLOTHING CO.
MADE IN LOS ANGELES



THE HERON
COTTON
#14015



THE KERRINGTON
COTTON
#14017



THE MILANA
COTTON
#34001



THE HAMILTON
CHAMBRAY
#14019



THE WILSON
CHAMBRAY
#14020



THE FREDERICK
SILK WOOL BLEND
#14018



THE KENNETH
COTTON BLEND
#44004



THE KENNETH
COTTON BLEND
#44005



THE WILLIAM
WOOL TWEED
#14016

SELF TIE BOW TIES
WHOLESALE : \$28 USD
SUGGESTED RETAIL: \$56 USD
PRODUCT SPECS: 2 - 2 1/4" WIDTH



POCKET SQUARE CLOTHING

A GENTLEMEN'S CLOTHING CO.
MADE IN LOS ANGELES



SOUTHERN GENT
COTTON
#14002



SOUTHERN GENT
COTTON
#14004



THE TWAIN
LINEN
#14009



THE MADRAS
COTTON
#14010



THE HAMPSHIRE
WOOL
#24011



THE EMERSON
POLY-SUITING
#14006



THE STANTON
POLY-SUITING
#14007



THE KAYO
COTTON
#14003



THE BROKER
COTTON
#14005

SELF TIE BOW TIES
WHOLESALE : \$28 USD
SUGGESTED RETAIL: \$56 USD
PRODUCT SPECS: 2 - 2 1/4" WIDTH



POCKET SQUARE CLOTHING

A GENTLEMEN'S CLOTHING CO.
MADE IN LOS ANGELES



THE DEAN
RAYON WOOL BLEND
#14012



THE DEAN
RAYON WOOL BLEND
#14013



THE BRIGGS
RAYON WOOL BLEND
#14008



THE UYUNI
COTTON BLEND
#44001



THE PARVATI
SILK BROCADE
#44002



THE PIERCE
SILK TWILL
#14011



THE YANKEE
DENIM
#24012

SELF TIE BOW TIES
WHOLESALE : \$28 USD
SUGGESTED RETAIL: \$56 USD
PRODUCT SPECS: 2 - 2 1/4" WIDTH



POCKET SQUARE CLOTHING

A GENTLEMEN'S CLOTHING CO.
MADE IN LOS ANGELES



CITRON
POPLIN
#54001



ROSE
POPLIN
#54005



COTTON CANDY
POPLIN
#54002



WILDBERRY
POPLIN
#54006



MANGO
POPLIN
#54004



JUNIPER
POPLIN
#54003



THE DIPLOMAT
POPLIN
#44003



THE FORD
POPLIN
#14014

SELF TIE BOW TIES
WHOLESALE : \$28 USD
SUGGESTED RETAIL: \$56 USD
PRODUCT SPECS: 2 - 2 1/4" WIDTH



POCKET SQUARE CLOTHING

A GENTLEMEN'S CLOTHING CO.
MADE IN LOS ANGELES



GOLD SMILEY
LAPEL PIN
#77001



SILVER SMILEY
LAPEL PIN
#77002



GOLD TIE BAR - 2"
STAINLESS STEEL
#77003



SILVER TIE BAR 2"
STAINLESS STEEL
#77005



GOLD TIE BAR - 1.5"
STAINLESS STEEL
#77004



SILVER TIE BAR 1.5"
STAINLESS STEEL
#77006

ACCESSORIES
WHOLESALE : \$15 USD
SUGGESTED RETAIL: \$30 USD



POCKET SQUARE CLOTHING

A GENTLEMEN'S CLOTHING CO.
MADE IN LOS ANGELES



FLORAL LAPEL PIN
NAVY FELT
#77007



FLORAL LAPEL PIN
ASH PINK FELT
#77008



FLORAL LAPEL PIN
MINT FELT
#77009



FLORAL LAPEL PIN
GRAY FELT
#77010



FLORAL LAPEL PIN
MUSTARD FELT
#77011



FLORAL LAPEL PIN
TAN FELT
#77012

ACCESSORIES
WHOLESALE : \$13 USD
SUGGESTED RETAIL: \$26 USD





W. WWW.POCKETSQUARECLOTHING.COM
E. WHOLESALE@POCKETSSQUARECLOTHING.COM

SOCIAL MEDIA

WWW.FACEBOOK/POCKETSSQUARECLOTHING
WWW.TWITTER.COM/POCKETSSQUARECO
WWW.YOUTUBE.COM/POCKETSSQUARECLOTHING
WWW.POCKETSSQUARECLOTHING.TUMBLR.COM
WWW.INSTAGRAM.COM/POCKETSSQUARECLOTHING