



# POCKET SQUARE CLOTHING

A GENTLEMEN'S CLOTHING CO.  
MADE IN LOS ANGELES

**W.** [WWW.POCKETSQUARECLOTHING.COM](http://WWW.POCKETSQUARECLOTHING.COM) **E.** [WHOLESALE@POCKETSQUARECLOTHING.COM](mailto:WHOLESALE@POCKETSQUARECLOTHING.COM)

LINE SHEET



# POCKET SQUARE CLOTHING

A GENTLEMEN'S CLOTHING CO.  
MADE IN LOS ANGELES



## Classic Collection

The Classic Collection's pieces are the cornerstone of PSC's design aesthetic. Constructed in a variety of fabrics (including wools, cottons, and silks) and original patterns, these Classic items are cleverly nuanced, but always elegant.



## Workwear Collection

The heritage inspired Workwear Collection draws from traditional collegiate design. Its classic narrow silhouette gives each piece a modern and tailored fit. The collection is made up of vintage silks and tweeds, perfect for the working man. Each piece is an ode to everyday gentlemen.



## Floral Collection

The Floral Collection is composed of distinctively patterned pieces. The prints, as the name suggests, are primarily floral, with a few tropical elements. The fabric selection ranges from cotton to canvas, in bright and understated colors alike.



## Emissary Collection

Both clean and sharp, our Emissary Collection channel's the diplomatic halls of the United Nations and Pentagon combined. These pieces strike a balance between windowpane suiting and camo print. Made of wool, linen, and canvas, their neutral colors make this collection appropriate for most occasions.



## Ice Cream Collection

Designed to reflect the youthful nature of the brand, the Ice Cream Collection features numerous colorful skinny ties. Mostly made of linen, you will also find corduroy, denim, canvas, and cotton pieces each packaged in custom ice cream pint containers. The concept revolves inherently around ice cream, and much like the classic collection, they too will have their own stories, or flavors for that matter.



## Rome Castille Collection

Designed for Pocket Square Clothing, the collection is a manifestation of several collaborations with up and coming Recording Artist Rome Castille. As his first fashion collaboration, Rome sought to use his style and energy to define the collection's feel and color palette. In the collection you will find a mix of floral and tropical prints which were channeled from the style of his "The Summer Collection" mix-tape.



# POCKET SQUARE CLOTHING

A GENTLEMEN'S CLOTHING CO.  
MADE IN LOS ANGELES

## About

Pocket Square Clothing (PSC) is a men's lifestyle apparel brand based in Los Angeles, California. They design and manufacture men's accessories which include their collections of bow ties, ties, and pocket squares. PSC's most recent addition to their collections is the Ice Cream Collection. The brand focuses on designing standalone, timeless pieces that compliment the Urban Gentleman's taste and add a higher level of complexity to his wardrobe. We like to say that the Urban Gentleman is a "sophisticated type of cool."

## Pocket Square Clothing

A pocket square, in its humble beginnings, was derived from the handkerchief, which was used for personal hygiene. The modern day pocket square has since shifted to an iconic piece used as a subtle accent to distinguish one self. Deconstructing the significance of the pocket square, Pocket Square Clothing sought to take the iconic piece's symbolism and apply it to the broader scheme of clothing design.

## History

Pocket Square Clothing was established in 2011 as a men's accessory brand. With no formal fashion training but with an architectural and business background, Rodolfo Ramirez and Andrew Cheung sought to create a lifestyle brand beyond clothing. To date they feature a collection of handcrafted bow ties, skinny neckties and pocket squares. The brand is a reflection of the ideals behind the Urban Gentleman. This is their effort to tell a story, to inspire and be inspired, and to create a powerful connection with you through timeless pieces.

## Vision

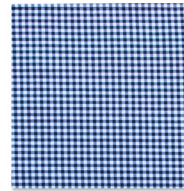
The vision is simple: to become a vehicle for the individual exploration of style. Pocket Square Clothing embraces the idea that style comes down to one's composure and being, the way one carries himself. The mission is to create a collection of visual and artistic accents, accents that then serve as to punctuate and project personality. The brand is inspired by the idea that everyone can move forward in life through style and etiquette, and the belief that clothing is a language that communicates one's individualistic qualities. Art, music, entertainment, architecture, and culture define the PSC lifestyle. The brand delves into realms of Urban, Vintage, and Chic Style. Pocket Square Clothing looks to create a brand beyond just clothing, and become a network of individuals who love clothing and use it to help decipher their style.



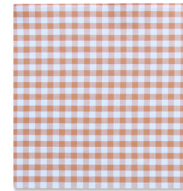


# POCKET SQUARE CLOTHING

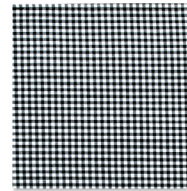
A GENTLEMEN'S CLOTHING CO.  
MADE IN LOS ANGELES



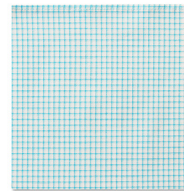
**SOUTHERN GENT**  
COTTON  
#11020



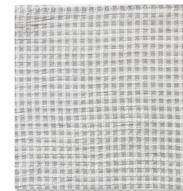
**SOUTHERN GENT**  
COTTON  
#11021



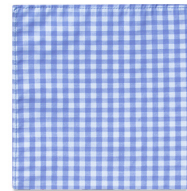
**SOUTHERN GENT**  
COTTON  
#11070



**SOUTHERN GENT**  
COTTON  
#11046



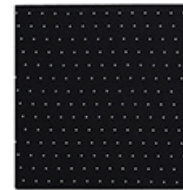
**SOUTHERN GENT**  
COTTON  
#11029



**SOUTHERN GENT**  
COTTON  
#11071



**THE ELLINGTON**  
POPLIN  
#21009



**THE HARRISON**  
COTTON BLEND  
#11039



**THE NORRIS**  
POLY BLEND  
#11061

**POCKET SQUARES**  
WHOLESALE : \$13 USD  
SUGGESTED RETAIL: \$26 USD  
PRODUCT SPECS: 11" X 11"



# POCKET SQUARE CLOTHING

A GENTLEMEN'S CLOTHING CO.  
MADE IN LOS ANGELES



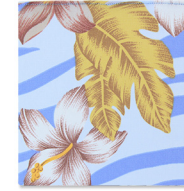
**THE SOCIALITE**  
COTTON BLEND  
#31016



**THE ARCADIA**  
LACE  
#11040



**THE CHAPMAN**  
COTTON  
#11077



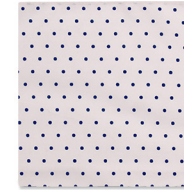
**THE KAILANI**  
SILK CHIFFON  
#31024



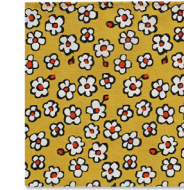
**THE HARTLEY**  
SATEEN  
#31043



**THE EATON**  
RAYON  
#31048



**THE LOWELL**  
COTTON  
#11083



**THE MELANIE**  
COTTON  
#31019



**THE SIENA**  
RAYON  
#31021

**POCKET SQUARES**  
WHOLESALE : \$13 USD  
SUGGESTED RETAIL: \$26 USD  
PRODUCT SPECS: 11" X 11"

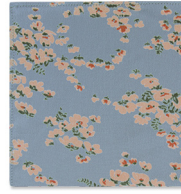


# POCKET SQUARE CLOTHING

A GENTLEMEN'S CLOTHING CO.  
MADE IN LOS ANGELES



**THE AZALEA**  
LINEN  
#31031



**THE NIKITA**  
RAYON  
#31037



**THE FLEUR**  
RAYON  
#31020



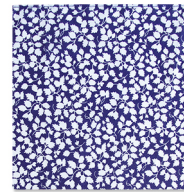
**THE NATHALIE**  
COTTON  
#31026



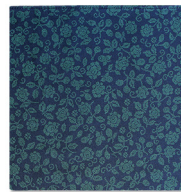
**THE AMELIE**  
COTTON  
#31027



**THE MADELINE**  
COTTON  
#31028



**THE HELENE**  
COTTON  
#31029



**THE ANNETTE**  
COTTON  
#31030



**THE MALDEN**  
COTTON  
#11051

**POCKET SQUARES**  
WHOLESALE : \$13 USD  
SUGGESTED RETAIL: \$26 USD  
PRODUCT SPECS: 11" X 11"



# POCKET SQUARE CLOTHING

A GENTLEMEN'S CLOTHING CO.  
MADE IN LOS ANGELES



**THE MERROW**  
NAVY COTTON  
#11030



**THE MERROW**  
RED COTTON  
#11031



**THE MERROW**  
GREEN COTTON  
#11032



**THE MERROW**  
BLACK COTTON  
#11033



**THE MERROW**  
NUDE COTTON  
#11034



**THE MERROW**  
MINT COTTON  
#11054



**THE MERROW**  
BLUSH BLUE COTTON  
#11052



**THE MERROW**  
CORAL COTTON  
#11057



**THE MERROW**  
YELLOW COTTON  
#11053

**POCKET SQUARES**  
WHOLESALE : \$13 USD  
SUGGESTED RETAIL: \$26 USD  
PRODUCT SPECS: 11" X 11"



# POCKET SQUARE CLOTHING

A GENTLEMEN'S CLOTHING CO.  
MADE IN LOS ANGELES



**THE MERROW**  
OLIVE  
#11088



**THE MERROW**  
GOLD  
#11089



**THE MERROW**  
FOREST GREEN  
#11090



**THE MERROW**  
PURPLE  
#11091



**THE MERROW**  
BROWN  
#11092



**THE MERROW**  
LAVENDER  
#11093

**POCKET SQUARES**  
WHOLESALE : \$13 USD  
SUGGESTED RETAIL: \$26 USD  
PRODUCT SPECS: 11" X 11"



# POCKET SQUARE CLOTHING

A GENTLEMEN'S CLOTHING CO.  
MADE IN LOS ANGELES



**THE MERROW**  
TAN COTTON  
#11055



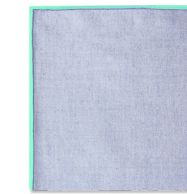
**THE MERROW**  
BLUSH PINK COTTON  
#11056



**THE MERROW**  
BURNT ORANGE COTTON  
#11085



**THE MERROW**  
MAROON CHAMBRAY  
#11043



**THE MERROW**  
MINT CHAMBRAY  
#11058



**THE MERROW**  
ORANGE CHAMBRAY  
#11059



**THE MERROW**  
NAVY CHAMBRAY  
#11035



**THE MERROW**  
MAROON CHAMBRAY  
#11050



**THE MARINER**  
CHAMBRAY  
#11060

**POCKET SQUARES**  
WHOLESALE : \$13 USD  
SUGGESTED RETAIL: \$26 USD  
PRODUCT SPECS: 11" X 11"



# POCKET SQUARE CLOTHING

A GENTLEMEN'S CLOTHING CO.  
MADE IN LOS ANGELES



**THE BEVERLY**  
SATIN  
#21005



**THE NEIMAN**  
SILK  
#11045



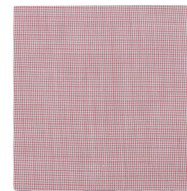
**THE NIGHTINGALE**  
RAYON  
#11036



**THE OBI**  
SILK  
#41006



**THE QUINN**  
CHAMBRAY  
#31025



**THE THOMAS**  
COTTON  
#11084



**BLACK PANTHER**  
COTTON  
#41002



**THE CORPORAL**  
VELVET  
#41003



**THE ECLAIRE**  
POLY BLEND  
#31032

**POCKET SQUARES**  
WHOLESALE : \$13 USD  
SUGGESTED RETAIL: \$26 USD  
PRODUCT SPECS: 11" X 11"

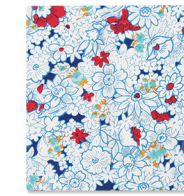


# POCKET SQUARE CLOTHING

A GENTLEMEN'S CLOTHING CO.  
MADE IN LOS ANGELES



**THE NAIRA**  
SILK CHARMEUSE  
#11022



**THE KONRAD**  
COTTON  
#31041



**THE TIFFANY**  
RETRO RAYON  
#11038



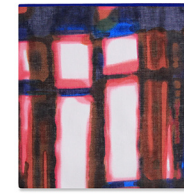
**THE TAO**  
SILK CREPE  
#11028



**THE MONARCH**  
SILK CREPE  
#11026



**THE MONARCH**  
SILK CREPE  
#11066



**THE NIYOL**  
COTTON  
#11024



**THE FINN**  
COTTON  
#11041



**THE IVY**  
SILK  
#11037

**POCKET SQUARES**  
WHOLESALE : \$13 USD  
SUGGESTED RETAIL: \$26 USD  
PRODUCT SPECS: 11" X 11"



# POCKET SQUARE CLOTHING

A GENTLEMEN'S CLOTHING CO.  
MADE IN LOS ANGELES



**THE WYATT**  
COTTON  
#31042



**THE WYLIE**  
COTTON  
#31053



**THE TRISTAN**  
COTTON  
#31054



**THE YOGI**  
SATIN  
#61004



**THE ROMIE ARTULETTA**  
SATIN  
#61003



**THE MONA LISA**  
RAYON BLEND  
#61001



**THE COMPANION**  
RAYON BLEND  
#61002



**THE OLIVIA**  
COTTON  
#31017



**THE OLIVIA**  
COTTON  
#31018

**POCKET SQUARES**  
WHOLESALE : \$13 USD  
SUGGESTED RETAIL: \$26 USD  
PRODUCT SPECS: 11" X 11"



# POCKET SQUARE CLOTHING

A GENTLEMEN'S CLOTHING CO.  
MADE IN LOS ANGELES



**THE ANASTASIA**  
RAYON  
#31036



**THE KONA**  
COTTON  
#31033



**THE DIANA**  
POLY / COTTON  
#31035



**THE AULANI**  
LINEN  
#31034



**THE EVA**  
RAYON  
#31038



**THE CORDOBA**  
SILK  
#11067



**THE MARIANNA**  
COTTON  
#31039



**THE VANNA**  
COTTON  
#31040



**THE HARVEY**  
COTTON  
#11069

**POCKET SQUARES**  
WHOLESALE : \$13 USD  
SUGGESTED RETAIL: \$26 USD  
PRODUCT SPECS: 11" X 11"





# POCKET SQUARE CLOTHING

A GENTLEMEN'S CLOTHING CO.  
MADE IN LOS ANGELES



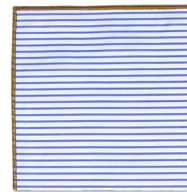
**THE YORK**  
NAVY MERROW DENIM  
#11062



**THE YORK**  
TAN MERROW DENIM  
#11063



**THE YORK**  
ORANGE MERROW DENIM  
#11064



**THE HAVANA**  
COTTON  
#11073



**THE SANTIAGO**  
COTTON  
#11074



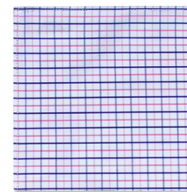
**THE LYON**  
LINEN  
#11075



**THE FINN**  
DENIM  
#11076



**THE YORK**  
DENIM  
#11065



**THE CHASE**  
COTTON  
#11072

**POCKET SQUARES**  
WHOLESALE : \$13 USD  
SUGGESTED RETAIL: \$26 USD  
PRODUCT SPECS: 11" X 11"



# POCKET SQUARE CLOTHING

A GENTLEMEN'S CLOTHING CO.  
MADE IN LOS ANGELES



**THE MADDOX**  
COTTON  
#31049



**THE JARVIS**  
COTTON  
#31050



**THE NIGEL**  
COTTON  
#31047



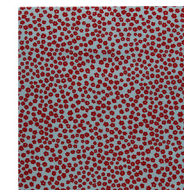
**THE OWEN**  
RAYON  
#11081



**THE CONNELL**  
CHAMBRAY  
#11086



**THE RHET**  
COTTON  
#11080



**THE KENWAY**  
COTTON  
#31052



**THE MERROW**  
PINK CHAMBRAY  
#11079



**THE MERROW**  
YELLOW CHAMBRAY  
#11078

**POCKET SQUARES**  
WHOLESALE : \$13 USD  
SUGGESTED RETAIL: \$26 USD  
PRODUCT SPECS: 11" X 11"

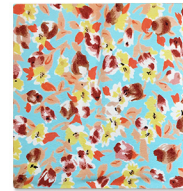


# POCKET SQUARE CLOTHING

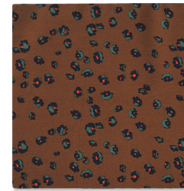
A GENTLEMEN'S CLOTHING CO.  
MADE IN LOS ANGELES



**THE CAMILA**  
COTTON  
#31039



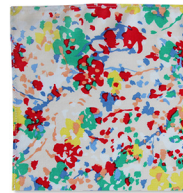
**THE BRIANNE**  
RAYON  
#31040



**THE GRACIE**  
RAYON  
#31046



**THE FALYN**  
COTTON  
#31055



**THE BURKE**  
COTTON  
#31056



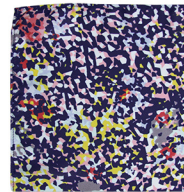
**THE BROOKS**  
RAYON  
#31057



**THE COLLISON**  
RAYON  
#41007



**THE ENNIS**  
COTTON  
#31058



**THE HOLLIS**  
SATIN  
#11094

**POCKET SQUARES**  
WHOLESALE : \$13 USD  
SUGGESTED RETAIL: \$26 USD  
PRODUCT SPECS: 11" X 11"



# POCKET SQUARE CLOTHING

A GENTLEMEN'S CLOTHING CO.  
MADE IN LOS ANGELES



**THE INGRAM**  
SATIN  
#41008



**THE MORROW**  
RAYON  
#31059



**THE ROBINSON**  
COTTON/RAYON  
#31060



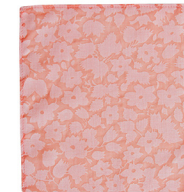
**THE MALIA**  
COTTON  
#31062



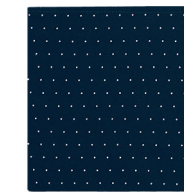
**THE KEONI**  
COTTON  
#31063



**THE WINSLOW**  
RAYON  
#31064



**THE MARRIE**  
COTTON  
#31061



**THE CLARK**  
SATIN/RAYON  
#11095

**POCKET SQUARES**  
WHOLESALE : \$13 USD  
SUGGESTED RETAIL: \$26 USD  
PRODUCT SPECS: 11" X 11"



# POCKET SQUARE CLOTHING

A GENTLEMEN'S CLOTHING CO.  
MADE IN LOS ANGELES



**THE LAILA**  
COTTON TWILL  
#32009



**THE ATIFA**  
COTTON TWILL  
#12007



**THE HERON**  
COTTON  
#12020



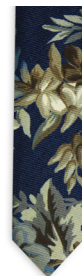
**THE ZIA**  
COTTON TWILL  
#32015



**THE ALEXANDRIA**  
LINEN  
#32005



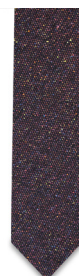
**THE FATIMA**  
COTTON TWILL  
#33003



**THE A.J.G**  
DENIM  
#62001



**THE ANGELIE**  
LINEN  
#32020



**THE COLIN**  
WOOL TWEED  
#12023

**SKINNY TIES**  
WHOLESALE : \$28 USD  
SUGGESTED RETAIL: \$56 USD  
PRODUCT SPECS: 2" WIDTH



# POCKET SQUARE CLOTHING

A GENTLEMEN'S CLOTHING CO.  
MADE IN LOS ANGELES



**CINNAMON KIWI**  
LINEN  
#52009



**PEACH RASPBERRY**  
LINEN  
#52013



**THE DIPLOMAT**  
LINEN  
#42005



**CARAMEL RASPBERRY**  
CORDUROY  
#52006



**TOFFEE**  
COTTON  
#52016



**THE BRIGGS**  
RAYON WOOL BLEND  
#12016



**THE DEAN**  
RAYON WOOL BLEND  
#12018



**THE DEAN**  
RAYON WOOL BLEND  
#12019



**THE RHAPSODY**  
COTTON TWILL  
#32004

**SKINNY TIES**  
WHOLESALE : \$28 USD  
SUGGESTED RETAIL: \$56 USD  
PRODUCT SPECS: 2" WIDTH



# POCKET SQUARE CLOTHING

A GENTLEMEN'S CLOTHING CO.  
MADE IN LOS ANGELES



**CITRON**  
POPLIN  
#53001



**MANGO**  
POPLIN  
#53005



**JUNIPER**  
POPLIN  
#53006



**THE DIPLOMAT**  
POPLIN  
#43003



**THE FORD**  
POPLIN  
#13015



**THE DIPLOMAT**  
LINEN  
#42011



**THE TRUMAN**  
SUITING  
#13005



**THE BARCLAY**  
SILK WOOL  
#13023



**THE BARRET**  
WOOL SUITING  
#13024

**SLIM TIES**  
WHOLESALE : \$28 USD  
SUGGESTED RETAIL: \$56 USD  
PRODUCT SPECS: 2 1/2" WIDTH



# POCKET SQUARE CLOTHING

A GENTLEMEN'S CLOTHING CO.  
MADE IN LOS ANGELES



**THE KENNETH**  
COTTON BLEND  
#43004



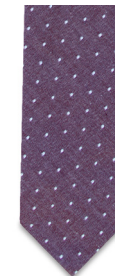
**THE WILLIAM**  
WOOL TWEED  
#13020



**THE REAGAN**  
SILK  
#23017



**THE HAMILTON**  
CHAMBRAY  
#13018



**THE WILSON**  
CHAMBRAY  
#13019



**THE KERRINGTON**  
COTTON  
#13021



**THE MILANA**  
COTTON  
#33001



**THE LAWRENCE**  
WOOL BLEND  
#13017



**THE EMORY**  
POLY SUITING  
#13013

**SLIM TIES**  
WHOLESALE : \$28 USD  
SUGGESTED RETAIL: \$56 USD  
PRODUCT SPECS: 2 1/2" WIDTH



# POCKET SQUARE CLOTHING

A GENTLEMEN'S CLOTHING CO.  
MADE IN LOS ANGELES



**THE KAYO**  
COTTON  
#13003



**THE SPORTSMAN**  
WOVEN COTTON  
#13006



**THE HAMPSHIRE**  
WOOL  
#23007



**THE KENNEDY**  
WOOL  
#13012



**THE YANKEE**  
DENIM  
#23009



**THE ARNOLD**  
WOOL  
#13022



**THE CARTER**  
CANVAS  
#13007



**THE BENTON**  
WOOL  
#13025



**THE BURTON**  
COTTON TWILL  
#13026

**SLIM TIES**  
WHOLESALE : \$28 USD  
SUGGESTED RETAIL: \$56 USD  
PRODUCT SPECS: 2 1/2" WIDTH



# POCKET SQUARE CLOTHING

A GENTLEMEN'S CLOTHING CO.  
MADE IN LOS ANGELES



**THE NATO**  
HEAVY COTTON  
#43001



**THE ANTOINETTE**  
COTTON TWILL  
#32001



**THE ALDEN**  
WOOL BLEND  
#13001



**THE MONROE**  
WOOL BLEND  
#13011



**THE ADAM**  
WOOL BLEND  
#13008



**THE EISENHOWER**  
WOOL BLEND  
#13009



**THE NATO**  
COTTON TWILL  
#43002



**THE NERO**  
POLY SUITING  
#13014



**THE CONLEY**  
WOOL  
#13031

**SLIM TIES**  
WHOLESALE : \$28 USD  
SUGGESTED RETAIL: \$56 USD  
PRODUCT SPECS: 2 1/2" WIDTH



# POCKET SQUARE CLOTHING

A GENTLEMEN'S CLOTHING CO.  
MADE IN LOS ANGELES



**THE DERBYSHIRE**  
POLY WOOL SUITING  
#23016



**THE ROCHDALE**  
POLY WOOL SUITING  
#23014



**THE STOCKPORT**  
POLY WOOL SUITING  
#23013



**THE OLDHAM**  
WOOL  
#23015



**THE ERICKSON**  
COTTON  
#13029



**THE WELSH**  
WOOL  
#13030



**THE CORWIN**  
WOOL TWEED  
#12024



**THE COOPER**  
WOOL TWEED  
#12017



**THE PAYTON**  
COTTON  
#23017

**TIES**  
WHOLESALE : \$28 USD  
SUGGESTED RETAIL: \$56 USD  
PRODUCT SPECS: 2" - 3" WIDTH



# POCKET SQUARE CLOTHING

A GENTLEMEN'S CLOTHING CO.  
MADE IN LOS ANGELES



**THE MELLOR**  
SILK KNIT  
#12012



**THE ENFIELD**  
SILK KNIT  
#12022



**THE ENFIELD**  
SILK KNIT (2 1/4 INCH)  
#12021



**THE STRETFORD**  
SILK KNIT  
#12010



**THE BRADLEY**  
SILK KNIT  
#12025

**SILK KNIT TIES**  
WHOLESALE : \$28 USD  
SUGGESTED RETAIL: \$56 USD  
PRODUCT SPECS: 2 1/4"-2 1/2" WIDTH



# POCKET SQUARE CLOTHING

A GENTLEMEN'S CLOTHING CO.  
MADE IN LOS ANGELES



**THE PATRICK**  
COTTON  
#13032



**THE EVANS**  
LINEN  
#32017



**THE CALDERON**  
COTTON  
#32016



**THE KNOX**  
WOOL  
#13028



# POCKET SQUARE CLOTHING

A GENTLEMEN'S CLOTHING CO.  
MADE IN LOS ANGELES

**TIES**  
WHOLESALE : \$28 USD  
SUGGESTED RETAIL: \$56 USD  
PRODUCT SPECS: 2" - 2.5" WIDTH



# POCKET SQUARE CLOTHING

A GENTLEMEN'S CLOTHING CO.  
MADE IN LOS ANGELES



**THE HERON**  
COTTON  
#14015



**THE KERRINGTON**  
COTTON  
#14017



**THE MILANA**  
COTTON  
#34001



**THE HAMILTON**  
CHAMRAY  
#14019



**THE WILSON**  
CHAMRAY  
#14020



**THE FREDERICK**  
SILK WOOL BLEND  
#14018



**THE KENNETH**  
COTTON BLEND  
#44004



**THE KENNETH**  
COTTON BLEND  
#44005



**THE WILLIAM**  
WOOL TWEED  
#14016

**SELF TIE BOW TIES**  
WHOLESALE : \$28 USD  
SUGGESTED RETAIL: \$56 USD  
PRODUCT SPECS: 2 - 2 1/4" WIDTH



# POCKET SQUARE CLOTHING

A GENTLEMEN'S CLOTHING CO.  
MADE IN LOS ANGELES



**SOUTHERN GENT**  
COTTON  
#14002



**SOUTHERN GENT**  
COTTON  
#14004



**THE TWAIN**  
LINEN  
#14009



**THE MADRAS**  
COTTON  
#14010



**THE HAMPSHIRE**  
WOOL  
#24011



**THE EMERSON**  
POLY-SUITING  
#14006



**THE STANTON**  
POLY-SUITING  
#14007



**THE KAYO**  
COTTON  
#14003



**THE BROKER**  
COTTON  
#14005

**SELF TIE BOW TIES**  
WHOLESALE : \$28 USD  
SUGGESTED RETAIL: \$56 USD  
PRODUCT SPECS: 2 - 2 1/4" WIDTH





# POCKET SQUARE CLOTHING

A GENTLEMEN'S CLOTHING CO.  
MADE IN LOS ANGELES



**THE DEAN**  
RAYON WOOL BLEND  
#14012



**THE DEAN**  
RAYON WOOL BLEND  
#14013



**THE BRIGGS**  
RAYON WOOL BLEND  
#14008



**THE UYUNI**  
COTTON BLEND  
#44001



**THE PARVATI**  
SILK BROCADE  
#44002



**THE PIERCE**  
SILK TWILL  
#14011



**THE YANKEE**  
DENIM  
#24012



**THE ADELE**  
COTTON TWILL  
#33002



**THE FATIMA**  
33003  
#33003

**SELF TIE BOW TIES**  
WHOLESALE : \$28 USD  
SUGGESTED RETAIL: \$56 USD  
PRODUCT SPECS: 2 - 2 1/4" WIDTH



# POCKET SQUARE CLOTHING

A GENTLEMEN'S CLOTHING CO.  
MADE IN LOS ANGELES



**CITRON**  
POPLIN  
#54001



**MANGO**  
POPLIN  
#54004



**JUNIPER**  
POPLIN  
#54003



**THE DIPLOMAT**  
POPLIN  
#44003



**THE FORD**  
POPLIN  
#14014



**THE WINSTON**  
POLY/COTTON  
#14021

**SELF TIE BOW TIES**  
WHOLESALE : \$28 USD  
SUGGESTED RETAIL: \$56 USD  
PRODUCT SPECS: 2 - 2 1/4" WIDTH



# POCKET SQUARE CLOTHING

A GENTLEMEN'S CLOTHING CO.  
MADE IN LOS ANGELES



**FLORAL LAPEL PIN**  
NAVY FELT  
#77007



**FLORAL LAPEL PIN**  
ASH PINK FELT  
#77008



**FLORAL LAPEL PIN**  
MINT FELT  
#77009



**FLORAL LAPEL PIN**  
GRAY FELT  
#77010



**FLORAL LAPEL PIN**  
MUSTARD FELT  
#77011



**FLORAL LAPEL PIN**  
TAN FELT  
#77012



**FLORAL LAPEL PIN**  
WHITE FELT  
#77018



**FLORAL LAPEL PIN**  
PURPLE FELT  
#77016



**FLORAL LAPEL PIN**  
RED FELT  
#77017

**ACCESSORIES**  
WHOLESALE : \$13 USD  
SUGGESTED RETAIL: \$26 USD



# POCKET SQUARE CLOTHING

A GENTLEMEN'S CLOTHING CO.  
MADE IN LOS ANGELES



**GOLD SMILEY**  
LAPEL PIN  
#77001



**SILVER SMILEY**  
LAPEL PIN  
#77002



**GOLD TIE BAR - 2"**  
STAINLESS STEEL  
#77003



**SILVER TIE BAR 2"**  
STAINLESS STEEL  
#77005



**GOLD TIE BAR - 1.5"**  
STAINLESS STEEL  
#77004



**SILVER TIE BAR 1.5"**  
STAINLESS STEEL  
#77006



**ROSE GOLD TIE BAR 2"**  
STAINLESS STEEL  
#77013



**FLORAL LAPEL PIN**  
GREEN FELT  
#77014



**FLORAL LAPEL PIN**  
BLUSH BLUE FELT  
#77015

**ACCESSORIES**  
WHOLESALE : \$15 USD  
SUGGESTED RETAIL: \$30 USD





**W.** [WWW.POCKETSQUARECLOTHING.COM](http://WWW.POCKETSQUARECLOTHING.COM)  
**E.** [WHOLESALE@POCKETSSQUARECLOTHING.COM](mailto:WHOLESALE@POCKETSSQUARECLOTHING.COM)

**SOCIAL MEDIA**

[WWW.FACEBOOK/POCKETSSQUARECLOTHING](http://WWW.FACEBOOK/POCKETSSQUARECLOTHING)  
[WWW.TWITTER.COM/POCKETSSQUARECO](http://WWW.TWITTER.COM/POCKETSSQUARECO)  
[WWW.YOUTUBE.COM/POCKETSSQUARECLOTHING](http://WWW.YOUTUBE.COM/POCKETSSQUARECLOTHING)  
[WWW.POCKETSSQUARECLOTHING.TUMBLR.COM](http://WWW.POCKETSSQUARECLOTHING.TUMBLR.COM)  
[WWW.INSTAGRAM.COM/POCKETSSQUARECLOTHING](http://WWW.INSTAGRAM.COM/POCKETSSQUARECLOTHING)